

Sheet 7

A digital solution to protect resources and heritage

Stereau Equipements et Services, Stereau's expertise center, includes engineers and experts specializing in water treatment plants and drinking water production.

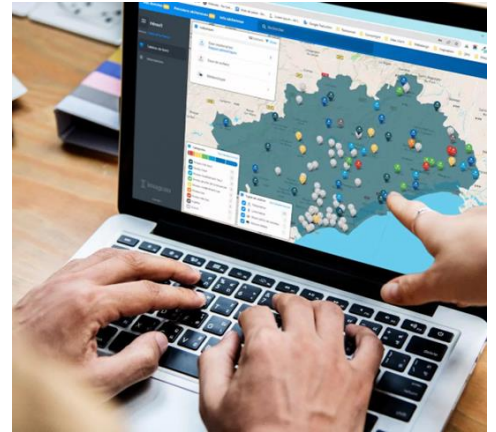
As part of its mission, **Stereau Equipements et Services** offers drinking water plant operators digital solutions from IMAGEAU, a subsidiary of the Saur group.

EMI

A digital solution coupled with environmental expertise.

This solution, **which combines artificial intelligence and expertise in drinking water systems, enables :**

- Continuous monitoring of water resources
- Anticipation of drought consequences:
 - Forecast water resource levels from 5 days to 90 days ahead
 - Predictive water level indicators
- Monitoring the lifespan and capacity of water intakes, including intake performance indicators.
- Developing resource and intake security action plans, especially for government agencies.



Climate change increasingly requires anticipatory management of water resources and heritage. Experts from Stereau Equipements et Services and IMAGEAU are at your disposal for a detailed presentation of this innovative digital tool, which is currently being used by more than 130 local authorities across the national territory.